

KEY

PROPOSED NO WAITING AT ANY TIME

EXISTING WAITING, LOADING AND PARKING RESTRICTIONS (WITH OR WITHOUT SYMBOLS)



Notes

Rev.	Description	Drwn	Sig.	Date	Chkd	Sig.	Date	Appr	Sig.	Date
A	SYMBOLS ADDED TO RESTRICTIONS	SDC	SDC	23.01.08	TPC	TPC	23.01.08	TPC	TPC	23.01.08
B	RESTRICTIONS AMENDED	CAH	CAH	09.11	JAR	JAR	09.11	TPC	TPC	09.11
C	RESTRICTIONS AMENDED	CAH	CAH	09.11	JAR	JAR	09.11	TPC	TPC	09.11

Drwn	Sig.	Date	Chkd	Sig.	Date	Appr	Sig.	Date
SDC	SDC	23.01.08	TPC	TPC	23.01.08	TPC	TPC	23.01.08
CAH	CAH	09.11	JAR	JAR	09.11	TPC	TPC	09.11
CAH	CAH	09.11	JAR	JAR	09.11	TPC	TPC	09.11

North Point

Based upon the Ordnance Survey mapping with the permission of the Controller of Her Majesty's Stationery Office. Crown copyright. Unauthorised reproduction infringes Crown copyright and may lead to prosecution or civil proceedings. Surrey County Council LA 078872 1996.

Drawn by	SDC	Sig.	SDC	Date	03.07
Checked by originator	TPC	Sig.	TPC	Date	03.07
Approved by	TPC	Sig.	TPC	Date	03.07

Project
WAVERLEY DPE
HEATH END AND WEYBOURNE
 Drawing
IMPLEMENTED TRAFFIC ORDERS

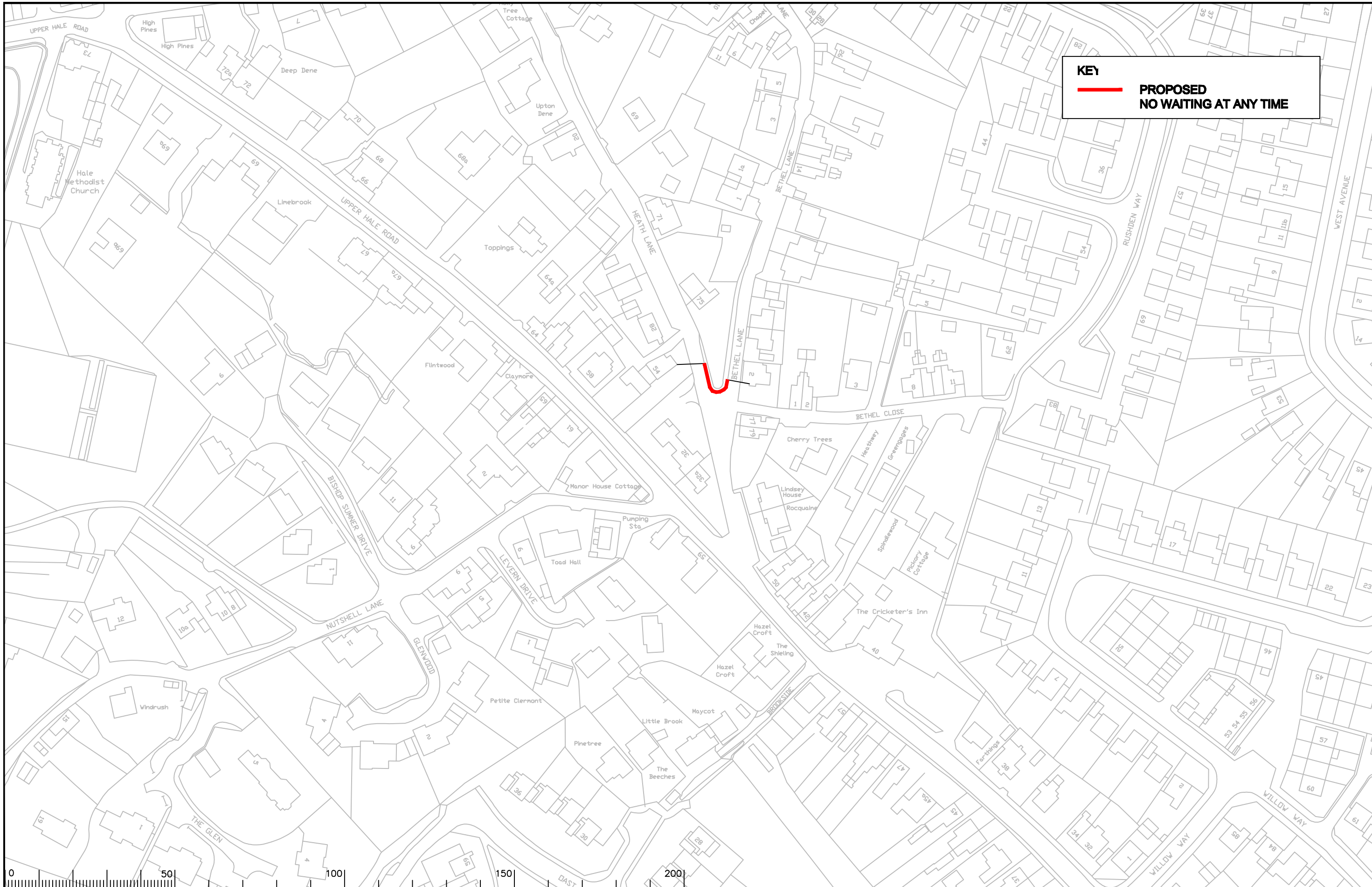
Project No.
3282/WAV

Contract Sheet No.
24011

Rev.
C

SURREY COUNTY COUNCIL
 Sustainable Development

Classification
ADVERTISED




KEY
 **PROPOSED**
NO WAITING AT ANY TIME

Notes

Rev.	Description	Drwn	Sig.	Date	Chkd	Sig.	Date	Appr	Sig.	Date

Drawn by	CAH	Sig.	CAH	Date	09.11
Checked by	JAR	Sig.	JAR	Date	09.11
Approved by	TPC	Sig.	TPC	Date	09.11

Project
WAVERLEY DPE
HEATH END AND WEYBOURNE
IMPLEMENTED TRAFFIC ORDERS



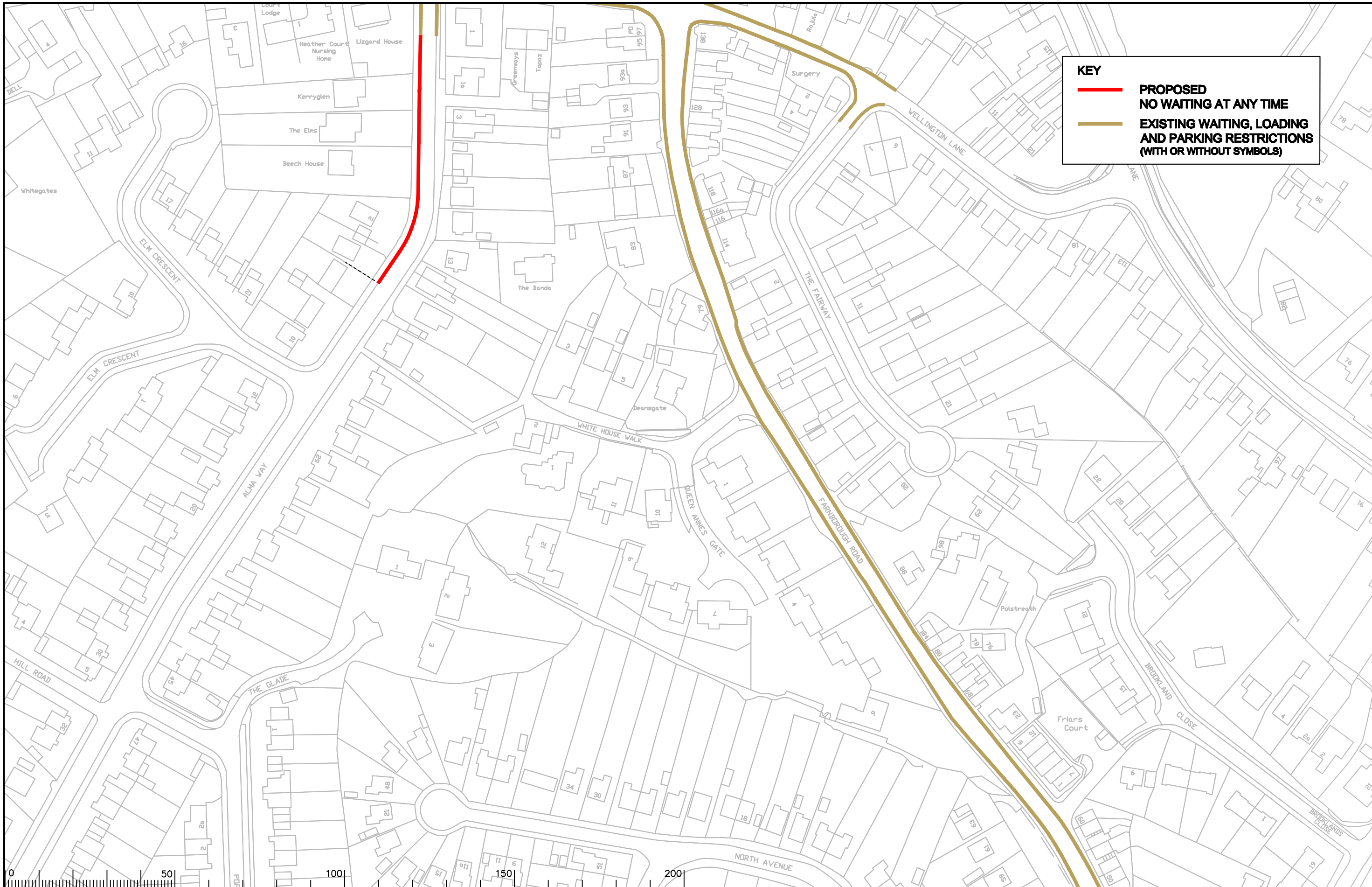
SURREY
 COUNTY COUNCIL
 Sustainable Development

Project No.
3282/WAV


Contract Sheet No.
24119


Rev.
-

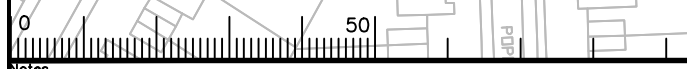
Classification
ADVERTISED



KEY

 **PROPOSED
NO WAITING AT ANY TIME**

 **EXISTING WAITING, LOADING
AND PARKING RESTRICTIONS
(WITH OR WITHOUT SYMBOLS)**




Notes

Rev.	Description	Drwn	Sig.	Date	Chkd	Sig.	Date	Appr	Sig.	Date
A	RESTRICTIONS AMENDED	CAH	CAH	09.11	JAR	JAR	09.11	TPC	TPC	09.11

Rev.	Description	Drwn	Sig.	Date	Chkd	Sig.	Date	Appr	Sig.	Date
A	RESTRICTIONS AMENDED	CAH	CAH	09.11	JAR	JAR	09.11	TPC	TPC	09.11

North Point



Based upon the Ordnance Survey mapping with the permission of the Controller of Her Majesty's Stationary Office © Crown copyright. Unauthorised reproduction infringes Crown copyright and may lead to prosecution or civil proceedings. Surrey County Council LA 078872 1996.

Drawn by	SDC	Sig.	SDC	Date	03.07
Checked by	TPC	Sig.	TPC	Date	03.07
Approved by	TPC	Sig.	TPC	Date	03.07

Project

**WAYERLEY DPE
HEATH END AND WEYBOURNE**

Drawing

IMPLEMENTED TRAFFIC ORDERS

SHEET OF



**SURREY
COUNTY COUNCIL**
Sustainable Development
Head of Transportation
24.10.04
04.10.04
04.10.04

Project No.	3282/WAV
Contract Sheet No.	24004
Rev.	A
Classification	ADVERTISED